

Estimating the critical point of QCD

Sourendu Gupta

ILGTI: TIFR

New Frontiers in QCD 2010
Yukawa Institute, Kyoto
March 10, 2010

Lattice measurements

The critical point

NLS at finite μ_B

Experimental measurements

The method

Lattice predictions

The method

Taylor expansion of the pressure in μ_B

$$P(T, \mu_B) = \sum_n \frac{1}{n!} \chi^{(n)}(T) \mu_B^n$$

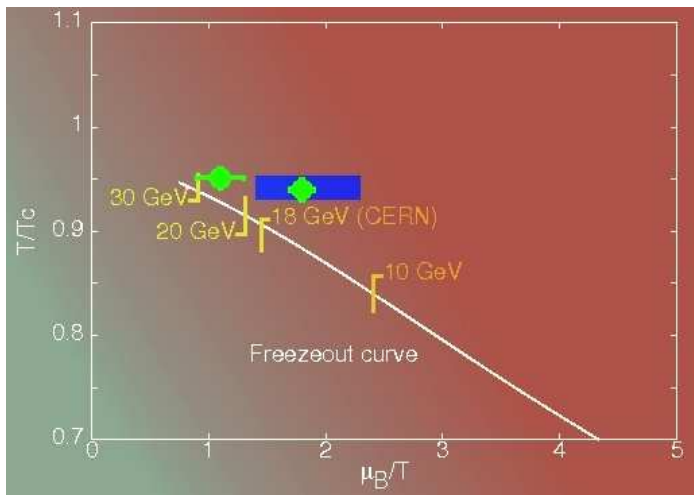
has Taylor coefficients that need to be evaluated only at $\mu_B = 0$ where there is no sign problem. The baryon number susceptibility (second derivative of P) has a related Taylor expansion

$$\chi_B(T, \mu_B) = \sum_n \frac{1}{n!} \chi^{(n+2)}(T) \mu_B^n.$$

χ_B diverges at the critical point. Series expansion can show signs of divergence (Gavai, SG, 2003). If all the coefficients are positive, then the divergence is at real μ_B .

The method is perfectly general and can be applied to any theory.

The phase diagram



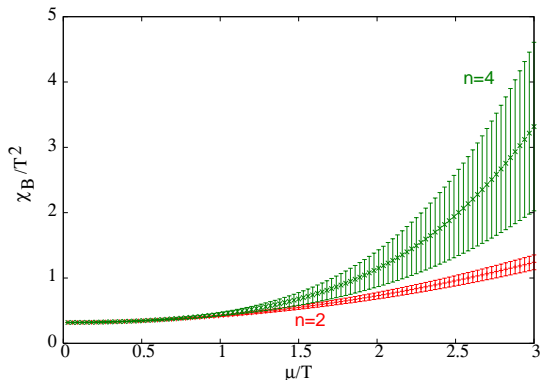
The implementation

- ▶ Our implementation is in $N_f = 2$ QCD using staggered quarks.
- ▶ Light quark bare masses are tuned to give $m_\pi = 230$ MeV.
- ▶ Currently our results from two cutoffs, $\Lambda = 1/a \simeq 800$ MeV ($N_t = 4$) and 1200 MeV ($N_t = 6$).
- ▶ Temperature scale setting performed by measuring the renormalized gauge coupling in three different renormalization schemes. At these Λ different schemes give slightly different scales: 1% error estimated from this source.
- ▶ Lattice sizes of 4–6 fm per side near T_c : several pion Compton wavelengths, several thermal wavelengths.
- ▶ Simulation algorithm is R-algorithm. MD time step has been changed by factor of 10 without any change in results.

Remaining issues

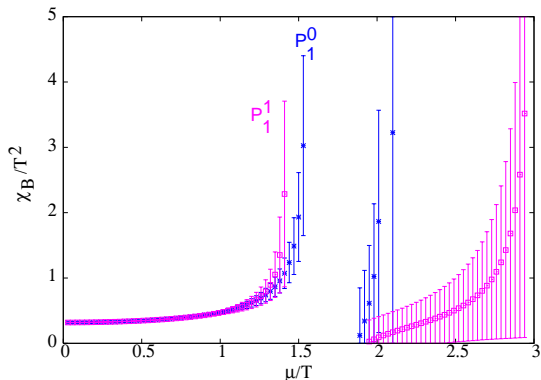
- ▶ Series expansion carried out to 8th order. What happens when order is increased? Intimately related to finite volume effects. Finite size scaling tested (Gavai, SG 2004, 2008)
- ▶ What happens when strange quark is unquenched (keeping the same action)? Numerical effects on ratios of susceptibility marginal when unquenching light quarks (Gavai, SG, 2005, RBRC 2009; however, de Forcrand, Philipsen, 2007, 2009).
- ▶ What happens when m_π is decreased? Estimate of μ_B^E may decrease somewhat: first estimates in Gavai, SG, Ray, 2003; see also Fodor, Katz 2001, 2002.
- ▶ What happens in the continuum limit? Estimate of μ_B^E may increase somewhat (Gavai, SG 2008).

Summation bad; resummation good



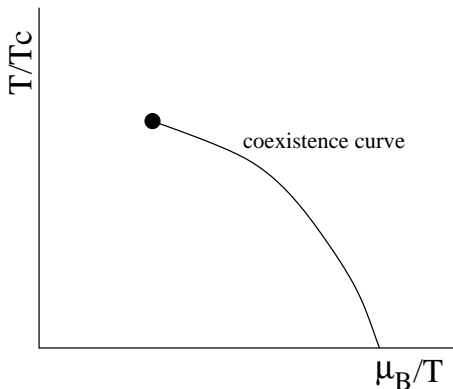
Infinite series diverges, but truncated series finite and smooth: sum is bad. Resummations needed to reproduce critical divergence. Padé resummation useful [Gavai, SG, 2008](#).

Summation bad; resummation good



Infinite series diverges, but truncated series finite and smooth: sum is bad. Resummations needed to reproduce critical divergence. Padé resummation useful [Gavai, SG, 2008](#).

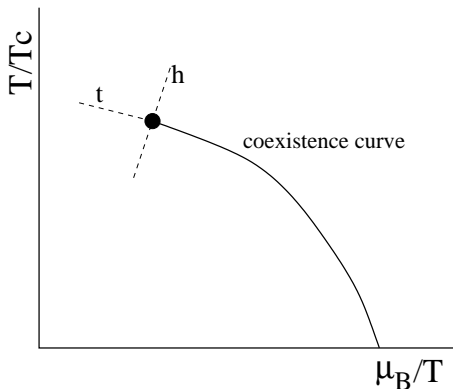
Critical divergences



Eigendirections of RG: t and h . Unknown. Model results?

If $\chi_B^{(2)} \simeq 1/|\mu - \mu_B|^\phi$ then $\chi_B^{(n)} \simeq 1/|\mu - \mu_B|^{(\phi+n-2)}$. Critical index ϕ currently unknown.

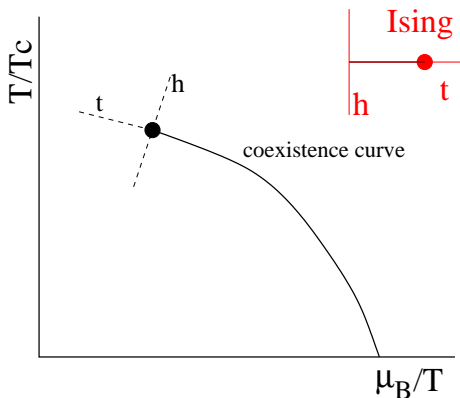
Critical divergences



Eigendirections of RG: t and h . Unknown. Model results?

If $\chi_B^{(2)} \simeq 1/|\mu - \mu_B|^\phi$ then $\chi_B^{(n)} \simeq 1/|\mu - \mu_B|^{(\phi+n-2)}$. Critical index ϕ currently unknown.

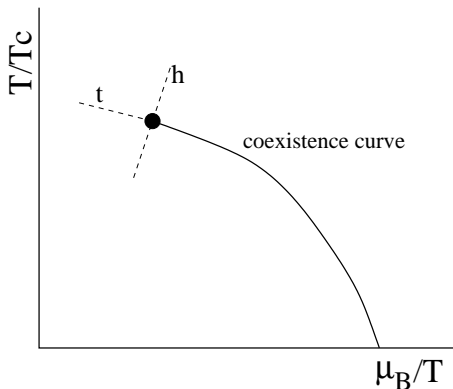
Critical divergences



Eigendirections of RG: t and h . Unknown. Model results?

If $\chi_B^{(2)} \simeq 1/|\mu - \mu_B|^\phi$ then $\chi_B^{(n)} \simeq 1/|\mu - \mu_B|^{(\phi+n-2)}$. Critical index ϕ currently unknown.

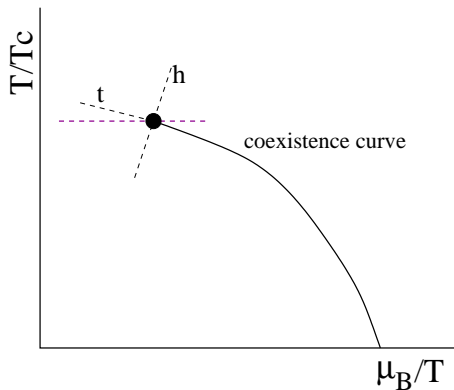
Critical divergences



Eigendirections of RG: t and h . Unknown. Model results?

If $\chi_B^{(2)} \simeq 1/|\mu - \mu_B|^\phi$ then $\chi_B^{(n)} \simeq 1/|\mu - \mu_B|^{(\phi+n-2)}$. Critical index ϕ currently unknown.

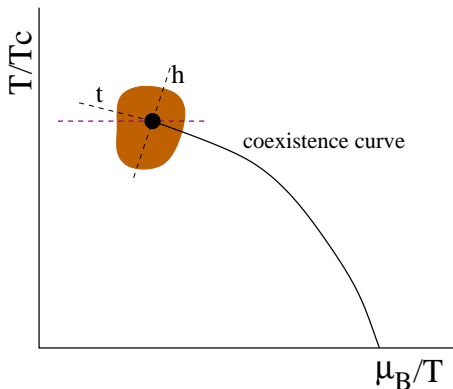
Critical divergences



Eigendirections of RG: t and h . Unknown. Model results?

If $\chi_B^{(2)} \simeq 1/|\mu - \mu_B|^\phi$ then $\chi_B^{(n)} \simeq 1/|\mu - \mu_B|^{(\phi+n-2)}$. Critical index ϕ currently unknown.

Critical divergences



Eigendirections of RG: t and h . Unknown. Model results?

If $\chi_B^{(2)} \simeq 1/|\mu - \mu_B|^\phi$ then $\chi_B^{(n)} \simeq 1/|\mu - \mu_B|^{(\phi+n-2)}$. Critical index ϕ currently unknown.

Gaussian Fluctuations

Normal fluctuations are Gaussian

Suggestion by [Stephanov, Rajagopal, Shuryak](#): measure the width of momentum distributions. Better idea, use conserved charges, because at any normal (non-critical) point in the phase diagram:

$$P(\Delta B) = \exp\left(-\frac{(\Delta B)^2}{2VT\chi_B}\right). \quad \Delta B = B - \langle B \rangle.$$

Bias-free measurement possible: [Asakawa, Heinz, Muller; Jeon, Koch](#).

Why Gaussian?

At any non-critical point the appropriate correlation length (ξ) is finite. If the number of independently fluctuating volumes ($N = V/\xi^3$) is large enough, then net B has Gaussian distribution: **central limit theorem** (CLT).

Is the current RHIC point non-critical?

Answer

Check whether CLT holds.

Recall the scalings of extensive quantity such as B and its variance σ^2 , skewness, \mathcal{S} , and Kurtosis, \mathcal{K} , given by

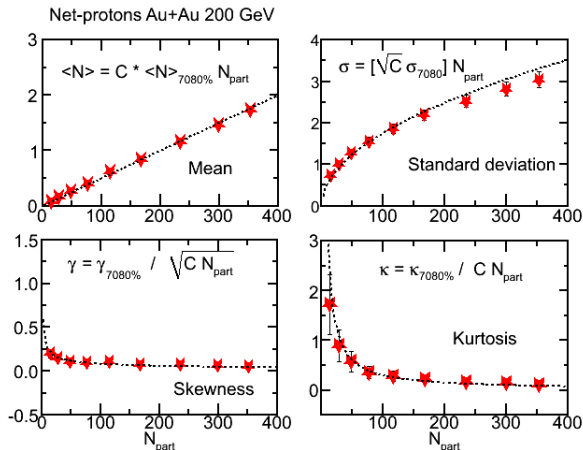
$$B(V) \propto V, \quad \sigma^2(V) \propto V, \quad \mathcal{S}(V) \propto \frac{1}{\sqrt{V}}, \quad \mathcal{K}(V) \propto \frac{1}{V}.$$

Caveat

Make sure that the nature of the physical system does not change while changing the volume. Perhaps best accomplished by changing rapidity acceptance while keeping centrality fixed.

Alternative tried by STAR is to change the number of participants.

STAR measurements



STAR Collaboration: QM 2009, Knoxville.

What to compare with QCD

The cumulants of the distribution are related to Taylor coefficients—

$$[B^2] = T^3 V \left(\frac{\chi^{(2)}}{T^2} \right), \quad [B^3] = T^3 V \left(\frac{\chi^{(3)}}{T} \right), \quad [B^4] = T^3 V \chi^{(4)}.$$

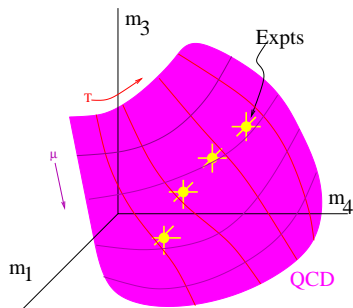
T and V are unknown, so direct measurement of QNS not possible (yet). Define variance $\sigma^2 = [B^2]$, skew $\mathcal{S} = [B^3]/\sigma^3$ and Kurtosis, $\mathcal{K} = [B^4]/\sigma^4$. Construct the ratios

$$m_1 = \mathcal{S}\sigma = \frac{[B^3]}{[B^2]}, \quad m_2 = \mathcal{K}\sigma^2 = \frac{[B^4]}{[B^2]}, \quad m_3 = \frac{\mathcal{K}\sigma}{\mathcal{S}} = \frac{[B^4]}{[B^3]}.$$

These are comparable with QCD (Gavai, SG, 2010).

Is there an internally consistent check that all backgrounds and systematic effects are removed and comparison with lattice QCD possible?

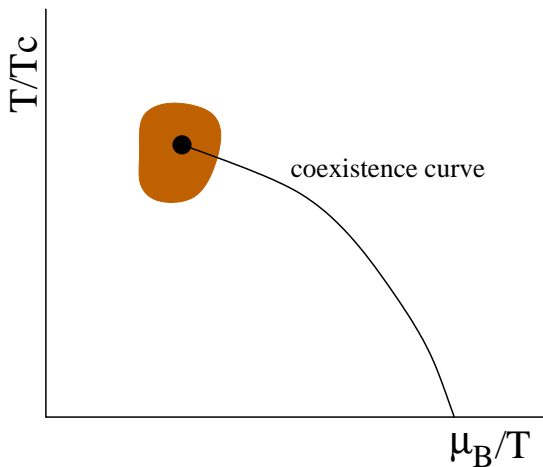
How to compare with QCD



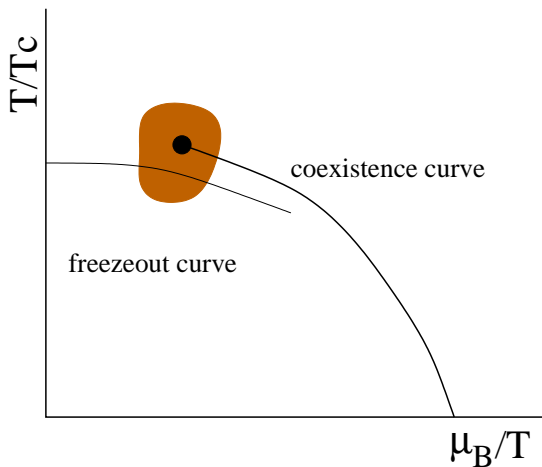
Possible measurements lie on a surface. By a comparison with QCD, a measurement of T/T_c and μ_B/T is immediate. Similarly for Q and S. [SG, 2009](#)

Out of equilibrium near CP: finite lifetime ([Berdnikov, Rajagopal](#)) and finite size ([Stephanov](#)). One more ratio of moments sufficient to check equilibrium. Also check freezeout conditions.

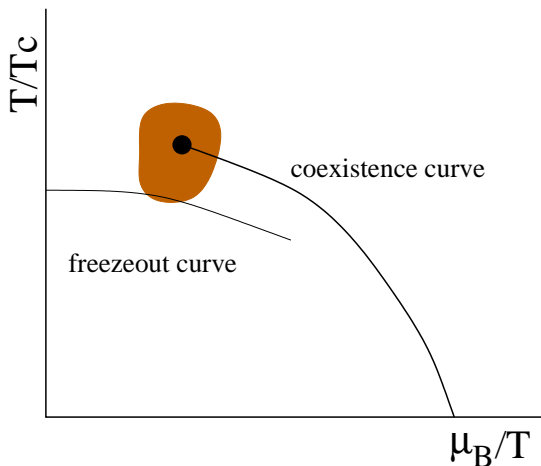
How to find the critical point: be lucky!



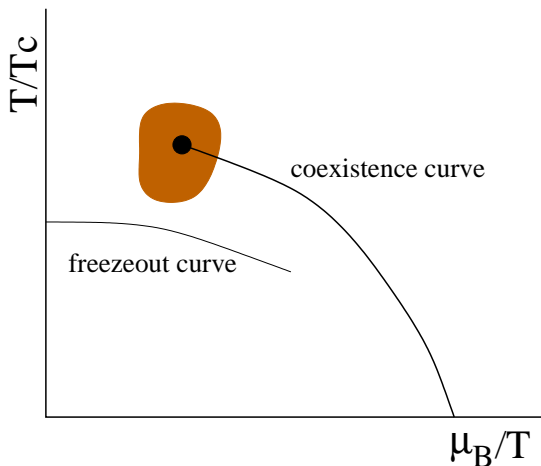
How to find the critical point: be lucky!



How to find the critical point: be lucky!



How to find the critical point: be lucky!



Matching to the freezeout curve

Setting the scale

Take $T_c = 175$: in agreement with **BW**, and (possibly) continuum extrapolation of **HotQCD**. Then freezeout curve close to the CP.

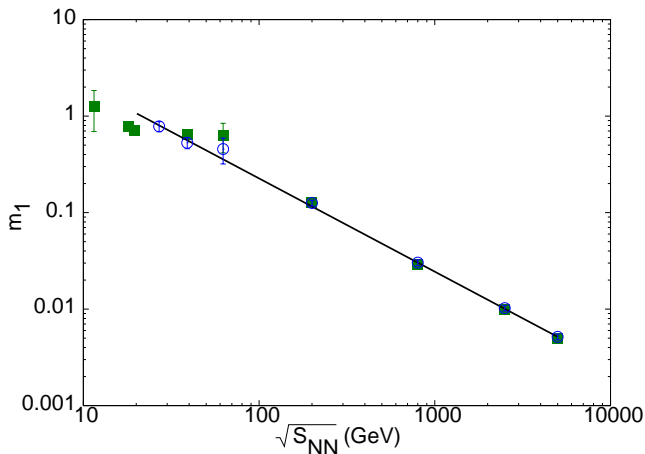
High energies

Robust predictions away from end point (RHIC top energy, LHC 2010 and top energies). Ratios of susceptibilities differ from the ideal gas. Check of lattice measurement of QNS (**Gavai, SG, 2010**).

Low energy-scan

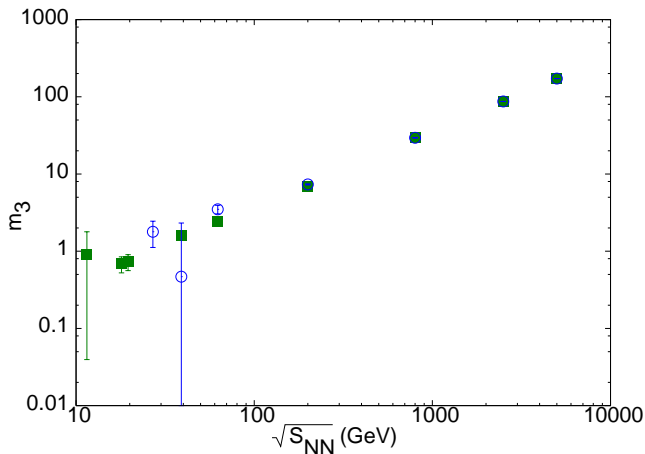
Clear deviations from extrapolation of high energy results, *i.e.*, $m_1 \simeq \mu_B/T$, $m_2 \simeq 1$ and $m_3 \simeq T/\mu_B$. Evidence of peak in lattice data: but continuum extrapolations in future.

Lattice results along the freezeout curve



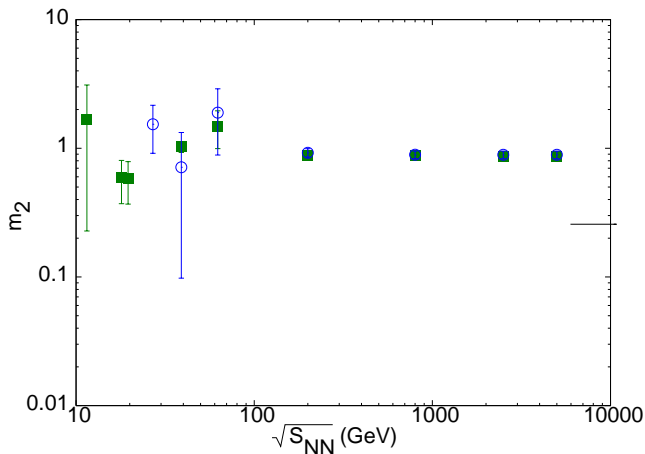
$T_c = 175$ MeV. Filled boxes: $N_t = 4$, unfilled circles: $N_t = 6$.

Lattice results along the freezeout curve



$T_c = 175$ MeV. Filled boxes: $N_t = 4$, unfilled circles: $N_t = 6$.

Lattice results along the freezeout curve



$T_c = 175$ MeV. Filled boxes: $N_t = 4$, unfilled circles: $N_t = 6$.

One way to find the critical point

- ▶ On lattice critical point estimates now available at two different cutoffs. Can put a band of uncertainty on the position of the CP. Further work in progress.

One way to find the critical point

- ▶ On lattice critical point estimates now available at two different cutoffs. Can put a band of uncertainty on the position of the CP. Further work in progress.
- ▶ Cumulants of conserved quantities measurable in experiments: STAR demonstrated the feasibility in 2009.

One way to find the critical point

- ▶ On lattice critical point estimates now available at two different cutoffs. Can put a band of uncertainty on the position of the CP. Further work in progress.
- ▶ Cumulants of conserved quantities measurable in experiments: STAR demonstrated the feasibility in 2009.
- ▶ Method needed to test whether all non-thermal effects can be removed from these measurements. One suggestion is made here: use ratios of cumulants.

One way to find the critical point

- ▶ On lattice critical point estimates now available at two different cutoffs. Can put a band of uncertainty on the position of the CP. Further work in progress.
- ▶ Cumulants of conserved quantities measurable in experiments: STAR demonstrated the feasibility in 2009.
- ▶ Method needed to test whether all non-thermal effects can be removed from these measurements. One suggestion is made here: use ratios of cumulants.
- ▶ Ratios of cumulants can be predicted from lattice data. Usual lattice artifacts have to be controlled. However, should peak at the critical point.

One way to find the critical point

- ▶ On lattice critical point estimates now available at two different cutoffs. Can put a band of uncertainty on the position of the CP. Further work in progress.
- ▶ Cumulants of conserved quantities measurable in experiments: STAR demonstrated the feasibility in 2009.
- ▶ Method needed to test whether all non-thermal effects can be removed from these measurements. One suggestion is made here: use ratios of cumulants.
- ▶ Ratios of cumulants can be predicted from lattice data. Usual lattice artifacts have to be controlled. However, should peak at the critical point.
- ▶ Clear peaks seen in lattice measurements. Signal more pronounced if T_c small (175 MeV) but clear even if $T_c = 192$ MeV. Good news for RHIC low energy scan. LHC will help set the scale of T_c .